

Magia70



ASSEMBLY INSTRUCTIONS

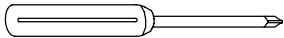
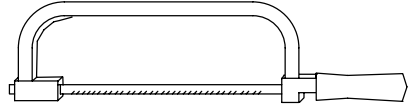




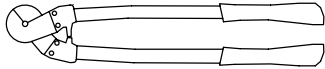
Ø 8x300 12x120 14x150 mm



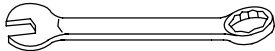
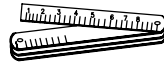
Ø 2.5 3.5 4.5 mm



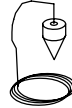
PH 2



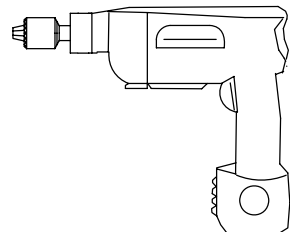
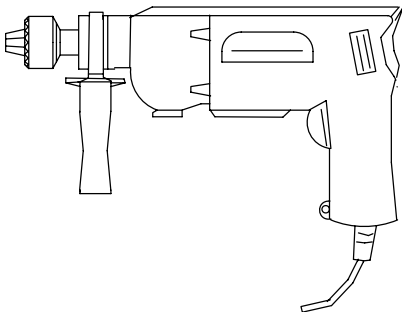
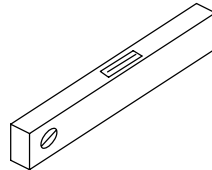
Ø 4



13 17 30 mm



1,5 2 2.5 3 4 5 6 12 mm



Unpack each element of the staircase before starting to assemble them. Arrange them on an ample surface and check quality (TAB. 1: A = Code, B = Quality).

Preliminary assembly

1. Insert the dowels B02 into the elements F48 without tightening completely. Mark the position of the holes using the template present in the package. Drill a hole using a \varnothing 4.5 mm bit and fasten elements F48 using screws BB5 (fig. 2).
2. Carefully measure the height from floor to floor to determine the number of spacer rings D45 and prepare above its spacer D47 (TAB. 2).
3. Assemble elements C63, C65, and C66 onto the balusters C03 (fig. 3).
4. Assemble the base G03, B17 and B46 (fig. 1).

Assembly

5. Determine the centre of the opening on the floor and position the base (G03+B17+B46) (fig. 4).
6. Drill using a \varnothing 14 mm point and secure the base (G03+B17+B46) to the floor with elements B13 (fig. 1).
7. Tighten the tube G02 onto the base (G03+B17+B46) (fig. 1).
8. Insert the base cover D46 into the tube G02 (fig. 5).
9. Insert the following in order: spacer rings D45, metal spacer D47, spacer rings D45 the first tread L34, spacer rings D45, metal spacer D47, spacer rings D45 and then a tread L34 again, and so forth. Position the treads, alternating between right and left, so that the weight is evenly distributed (fig. 5).
10. Once you have reached the end of the tube G02, tighten element B47, tighten the following tube G02 and continue assembling the staircase (fig. 5).
11. Once you have reached the end of the tube G02, screw element B46 and element G01 (screw element G01 taking into account the fact that it must be 15 cm taller than the height of the staircase, as shown in fig. 6). Continue to insert the treads using element D01 inserted in the final treads L34, which are not centred on pole G02.
12. Lastly, insert the landing E06. After choosing the direction of rotation (fig. 7), position the landing (see point 13) on the tread arrival side L34 (fig. 8). (fig. 4). Establish the position of the holes using the template provided, drill the landing using a \varnothing 4.5 mm bit and assemble element F48 using parts B02 and C57.
13. Insert element B05, B04 and secure element B03 sufficiently, keeping in mind that the treads must still rotate (fig. 1).

Fixing the landing

14. Move element F12 next to the floor. Establish the position, maintaining a distance of approximately 15 cm from the outer edge of landing E06, drill a hole using a \varnothing 14 mm bit and secure in a permanent manner using elements B13 (Fig. 1).
15. Secure elements F12 to landing E06 using elements C58 (drill landing E06 with a \varnothing 5 mm bit).
16. Position elements B95.

To assemble the railing

17. Fan the treads out L34. You can now climb the stairs.
18. Start from landing E06, insert the longer balusters C03 (H 1190 mm) connecting treads L34. Position the balusters C03 with element C63 with the opening towards the top (fig. 8). Only tighten element B02 from the lower tread (fig. 2).
19. Check that all the balusters C03 positioned are vertical. Take care during this operation because very important to assembling the staircase correctly.
20. Tighten element B03 in a permanent manner (fig. 8).
21. Only tighten element B02 from the upper tread (fig. 2).
22. Check that the balusters C03 are vertical again and correct, repeating the operations described above if necessary.
23. To calculate the exact height of the starting baluster C03, proceed as follows: Position a baluster C03 (H 1190 mm) inside element F48 and insert it into element F01, which must then be secured to the ground. Measure the distance between the upper part of the starting tread L34 and the end of baluster C03, which has just been inserted. Compare the figure obtained with the one for the balusters C03 mounted previously, and cut to obtain the same height for all the balusters C03 in the staircase (fig. 1).
24. Secure element F01 to the floor in a position corresponding to the first baluster C03, drilling a hole with a \varnothing 8 mm bit. Use elements C58, B12, B83 and B02 (fig. 1).
25. Identify the segments of the handrail not marked in red A22 and the one marked in red A23, which will be used

on landing E06 (fig. 9).

26. Start modelling the handrails A22 not marked in red and try to give them a curve which follows the staircase as much as possible (fig. 1).
27. Start from baluster C03 connecting landing E06 and tread L34, and begin by securing handrail A22, which has just been bent. Use elements C64 with the screw.
Warning: position the seam of the coating on the handrail facing the bottom.
28. Join the other segments of handrail A22, tightening, gluing and shaping them one after the other. Use elements B33, and D35. Position the thickest part of D35 towards the outside.
29. Saw off any excess handrail next to the first C03 baluster of the staircase using a hacksaw.
30. Complete handrail A22 by securing element A21 using elements C64 and the glue (X01) (fig. 1).
31. Insert all of the other balusters into elements F48, which were secured to treads L34 previously. Tighten element B02 and fasten to handrail A22, taking care to ensure that they are vertical. We recommend assembling the shorter balusters first.
32. Check the linearity of the handrail A22 and correct using a rubber hammer, if necessary.
33. Complete railing assembly by inserting elements B82 into the lower part of the balusters C03 (fig. 1-1C).

Assembling the balustrade

34. Assemble column C04 onto element G01, which protrudes from landing E06 (fig. 8).
35. Position elements F01 on landing E06 using elements C58 and B02. Drill landing E06 using a \varnothing 5 mm bit, maintaining the same centre to centre distance between the holes as the one used between the balusters C03 of the railings assembled before.
36. Position the shorter balusters C03 (H 935 mm) and tighten elements B02 of parts F01 (fig. 1).
37. Secure element A24 onto column C04 using element B02. Then, fasten the handrail A23 marked with the letter "R" using screw C64 (fig. 1).
38. Fasten handrail A23 to the column C03 nearest to the landing, using screws C64 and making sure that they are perfectly vertical. Repeat the same procedure for all of the balusters C03 present on landing E06.
39. Saw off any handrail in excess using a hacksaw. Complete handrail A22 by securing element A21 using elements C64 and the glue (X01) (fig. 1).
40. Based on the position and the existence of walls around the opening of the staircase, one or two extra balusters C03 (H 935 mm) may need to be positioned (fig. 10).
41. In this case, consider a space equidistant from the other balusters or from the wall.
To secure these, we recommend drilling landing E06 with a \varnothing 5 mm bit and using elements F01, C58, and B02. We also recommend drilling the floor with a \varnothing 12 mm bit and using elements F01, B23, B27, C84, C85 and B02 (fig. 11). If necessary, secure the balustrade on the landing to the balustrade on the floor, (fig. 10), model the handrails carefully, following well-secured curves. Any wrinkles that form on the inside of the handrails are not a defect, rub energetically (generating heat) with a paper towel until they disappear.

Final Assembly

42. To further stiffen the staircase at intermediate points, secure elements F09 to the wall and join using elements F08, with balusters C03. Drill using a \varnothing 8 mm point and use elements C50, C49, C58, B12 (fig. 12).

TAB. 2

Use TAB. 2 to establish the number of spacer rings D45 required (H = height, A = rise).

Example: for a measured height of 293 cm from floor to floor and a staircase with 13 treads, the following is required:

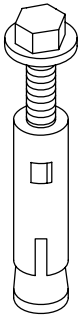
1. Read the number of spacer rings required, 40 in column A/13, corresponding to a height of 293 cm in column H.
2. Distribute the spacer rings D45 in sequence, one at the time, on each metal spacer D47 until you have used them all (keep aligned with the point of injection present on the visible edge in order to improve its aesthetics).
Up to a maximum of 4 spacer rings D45 can be inserted on the 1st metal spacer D47 (three on top and 1 below).
Up to a maximum of 6 spacer rings D45 can be inserted on the remaining metal spacers D47 (3 on top and 3 below).
3. The final result will be 4 spacer rings D45 on the 1st metal spacer D47 (3 on top and 1 below) and 3 spastic spacers on the twelve remaining spacers D47 (2 on top and below).

TAB 1

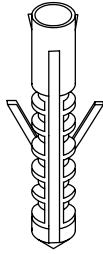
A	B														
	Ø 110					Ø 130					Ø 150				
	11	12	13	14	15	11	12	13	14	15	11	12	13	14	15
A21	3	3	3	3	3	3	3	3	3	3	3	3	3	3	3
A22	4	5	5	6	6	4	5	5	6	6	4	5	5	6	6
A23	1	1	1	1	1	1	1	1	1	1	1	1	1	1	1
A24	2	2	2	2	2	2	2	2	2	2	2	2	2	2	2
B02	54	58	62	66	70	55	59	63	67	71	56	60	64	68	72
B03	1	1	1	1	1	1	1	1	1	1	1	1	1	1	1
B04	1	1	1	1	1	1	1	1	1	1	1	1	1	1	1
B05	1	1	1	1	1	1	1	1	1	1	1	1	1	1	1
B12	10	10	10	10	10	10	10	10	10	10	10	10	10	10	10
B13	6	6	6	6	6	6	6	6	6	6	6	6	6	6	6
B17	1	1	1	1	1	1	1	1	1	1	1	1	1	1	1
B23	2	2	2	2	2	2	2	2	2	2	2	2	2	2	2
B27	2	2	2	2	2	2	2	2	2	2	2	2	2	2	2
B33	4	5	5	6	6	4	5	5	6	6	4	5	5	6	6
B46	2	2	2	2	2	2	2	2	2	2	2	2	2	2	2
B47	1	1	1	2	2	1	1	1	2	2	1	1	1	2	2
B82	30	33	36	39	42	30	33	36	39	42	30	33	36	39	42
B95	3	3	3	3	3	3	3	3	3	3	3	3	3	3	3
BB5	123	135	147	159	171	123	135	147	159	171	123	135	147	159	171
C03 H.1190	11	12	13	14	15	11	12	13	14	15	11	12	13	14	15
C03 H.1130	10	11	12	13	14	10	11	12	13	14	10	11	12	13	14
C03 H.1060	10	11	12	13	14	10	11	12	13	14	10	11	12	13	14
C03 H.935	8	8	8	8	8	9	9	9	9	9	10	10	10	10	10
C04	1	1	1	1	1	1	1	1	1	1	1	1	1	1	1
C49	3	3	3	3	3	3	3	3	3	3	3	3	3	3	3

TAB 1

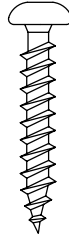
A	B														
	Ø110					Ø130					Ø150				
	11	12	13	14	15	11	12	13	14	15	11	12	13	14	15
C50	3	3	3	3	3	3	3	3	3	3	3	3	3	3	3
C58	16	16	16	16	16	16	16	16	16	16	16	16	16	16	16
C63	39	42	45	48	51	40	43	46	49	52	41	44	47	50	53
C64	84	90	96	102	108	86	92	98	104	110	88	94	100	106	112
C65	39	42	45	48	51	40	43	46	49	52	41	44	47	50	53
C66	39	42	45	48	51	40	43	46	49	52	41	44	47	50	53
C84	2	2	2	2	2	2	2	2	2	2	2	2	2	2	2
C85	2	2	2	2	2	2	2	2	2	2	2	2	2	2	2
D01	3	4	3	3	3	3	4	3	3	3	3	4	3	3	3
D35	4	5	5	6	6	4	5	5	6	6	4	5	5	6	6
D45	66	72	78	84	90	66	72	78	84	90	66	72	78	84	90
D46	1	1	1	1	1	1	1	1	1	1	1	1	1	1	1
D47	11	12	13	14	15	11	12	13	14	15	11	12	13	14	15
E06	1	1	1	1	1	1	1	1	1	1	1	1	1	1	1
F01	9	9	9	9	9	10	10	10	10	10	11	11	11	11	11
F07	1	1	1	1	1	1	1	1	1	1	1	1	1	1	1
F08	3	3	3	3	3	3	3	3	3	3	3	3	3	3	3
F09	3	3	3	3	3	3	3	3	3	3	3	3	3	3	3
F12	3	3	3	3	3	3	3	3	3	3	3	3	3	3	3
F48	41	45	49	53	57	41	45	49	53	57	41	45	49	53	57
G01	1	1	1	1	1	1	1	1	1	1	1	1	1	1	1
G02	2	2	2	3	3	2	2	2	3	3	2	2	2	3	3
G03	1	1	1	1	1	1	1	1	1	1	1	1	1	1	1
L34	10	11	12	13	14	10	11	12	13	14	10	11	12	13	14
X01	1	1	1	1	1	1	1	1	1	1	1	1	1	1	1



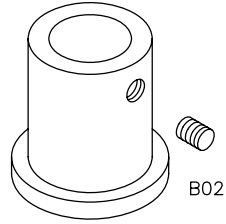
B13



B12



C58

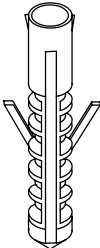


F01

B02



C84



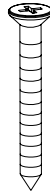
C85



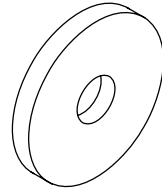
B27



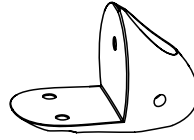
B23



BB5



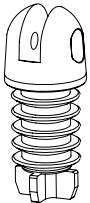
D35



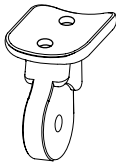
F48



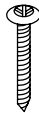
B82



C63



C63



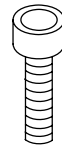
C64



C66



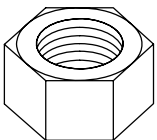
C65



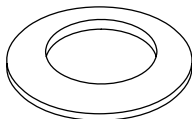
C50



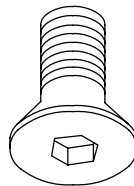
C49



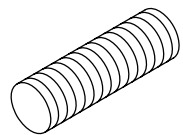
B03



B04



B17



B33

TAB 2

H	A	D45
	11	
231		0
232		2
233		4
234		6
235		8
236		10
237		12
238		14
239		16
240		18
241		20
242		22
243		24
244		26
245		28
246		30
247		32
248		34
249		36
250		38
251		40
252		42
253		44
254		46
255		48
256		50
257		52
258		54
259		56
260		58
261		60
262		62
263		64
264		66

H	A	D45
	12	
252		0
253		2
254		4
255		6
256		8
257		10
258		12
259		14
260		16
261		18
262		20
263		22
264		24
265		26
266		28
267		30
268		32
269		34
270		36
271		38
272		40
273		42
274		44
275		46
276		48
277		50
278		52
279		54
280		56
281		58
282		60
283		62
284		64
285		66
286		68
287		70
288		72

H	A	D45
	13	
273		0
274		2
275		4
276		6
277		8
278		10
279		12
280		14
281		16
282		18
283		20
284		22
285		24
286		26
287		28
288		30
289		32
290		34
291		36
292		38
293		40
294		42
295		44
296		46
297		48
298		50
299		52
300		54
301		56
302		58
303		60
304		62
305		64
306		66
307		68
308		70
309		72
310		74
311		76
312		78

H	A	D45
	14	
294		1
295		3
296		5
297		7
298		9
299		11
300		13
301		15
302		17
303		19
304		21
305		23
306		25
307		27
308		29
309		31
310		33
311		35
312		37
313		39
314		41
315		43
316		45
317		47
318		49
319		51
320		53
321		55
322		57
323		59
324		61
325		63
326		65
327		67
328		69
329		71
330		73
331		75
332		77
333		79
334		81
335		83

H	A	D45
	15	
315		1
316		3
317		5
318		7
319		9
320		11
321		13
322		15
323		17
324		19
325		21
326		23
327		25
328		27
329		29
330		31
331		33
332		35
333		37
334		39
335		41
336		43
337		45
338		47
339		49
340		51
341		53
342		55
343		57
344		59
345		61
346		63
347		65
348		67
349		69
350		71
351		73
352		75
353		77
354		79
355		81
356		83
357		85
358		87
359		89

FIG. 1

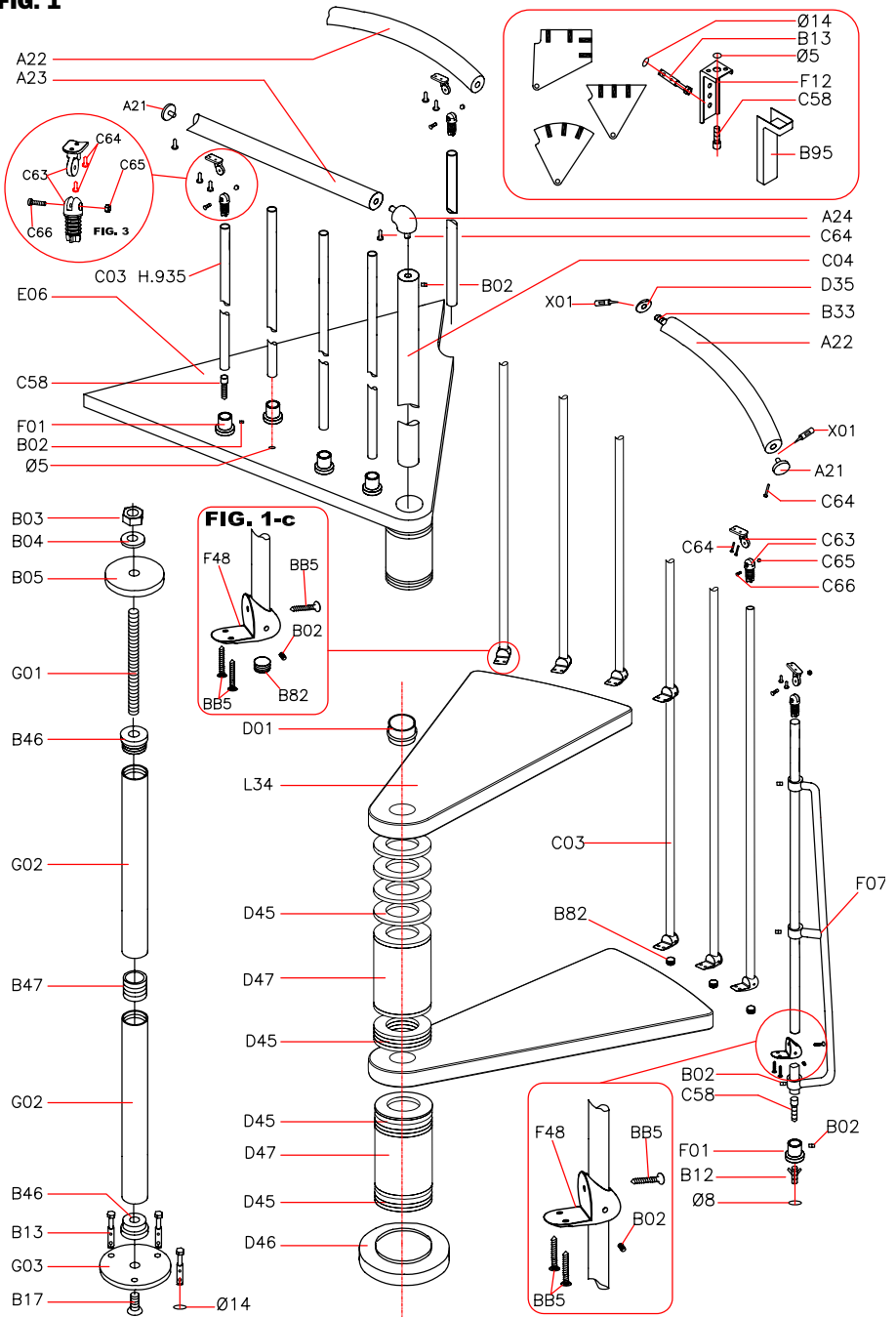


FIG. 2

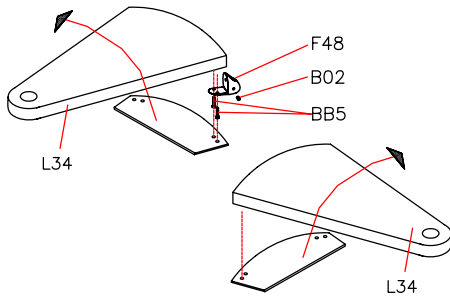


FIG. 3

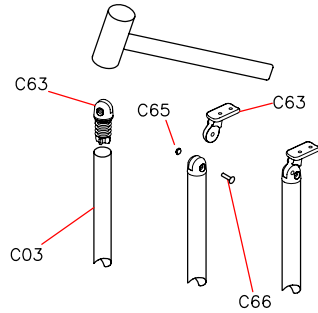


FIG. 4

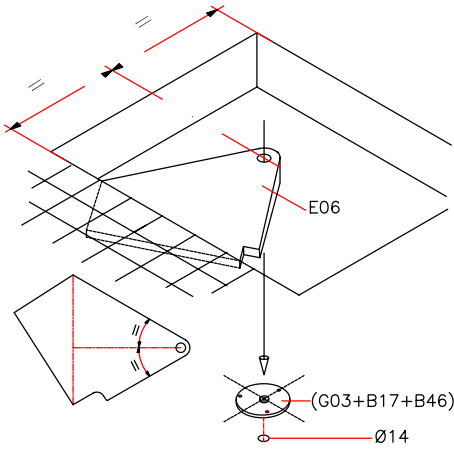


FIG. 5

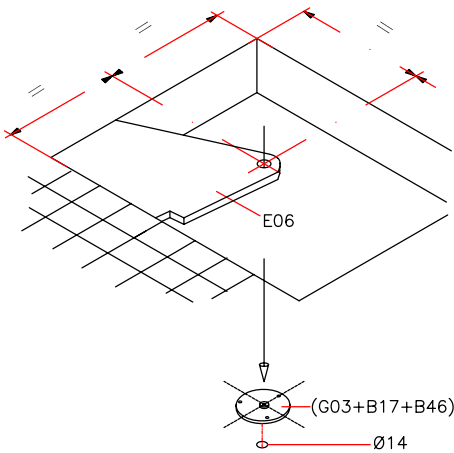
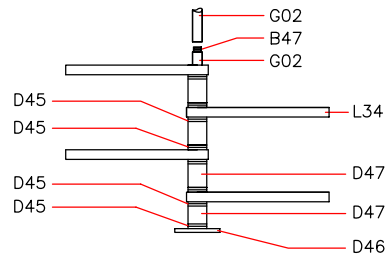


FIG. 6

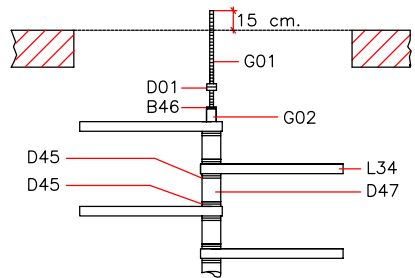
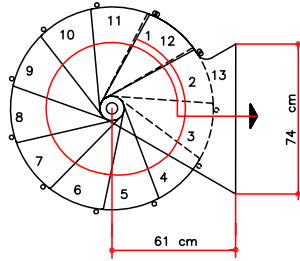
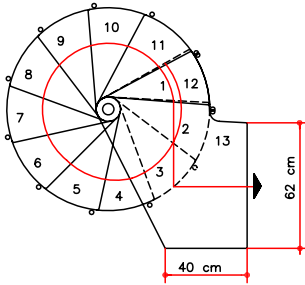
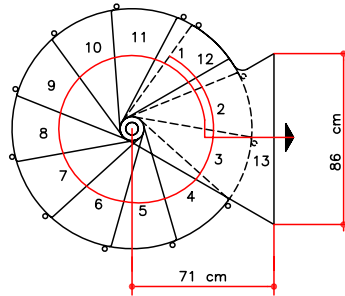
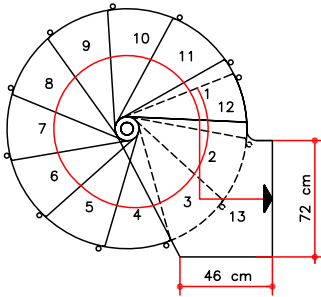
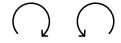


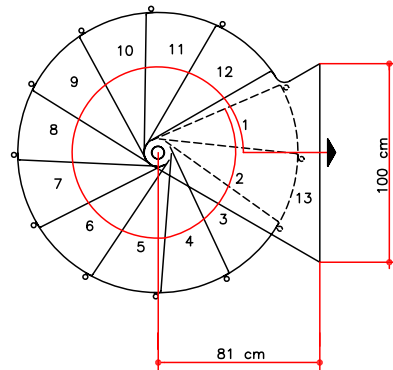
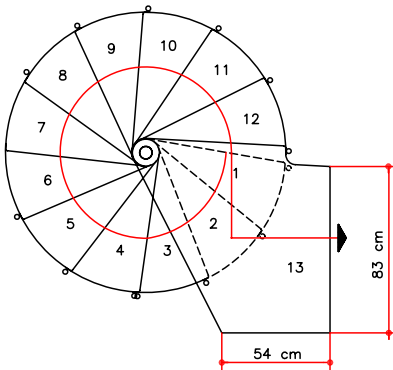
FIG. 7



Ø110 cm



Ø130 cm



Ø150 cm

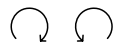


FIG. 8

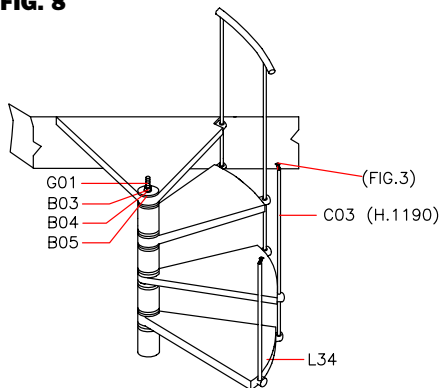


FIG. 9

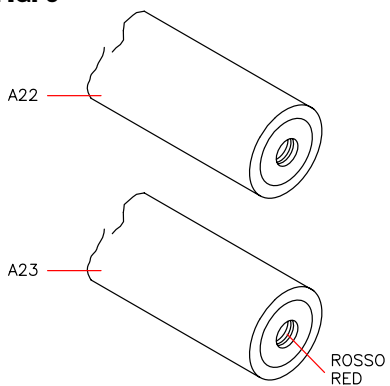


FIG. 10

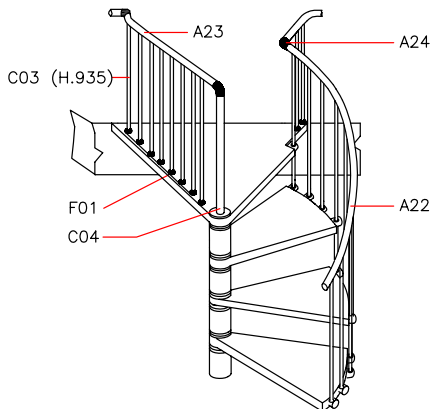


FIG. 11

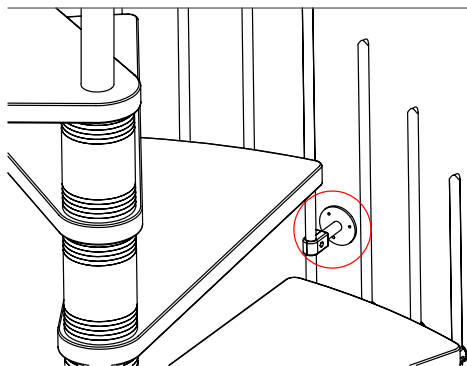
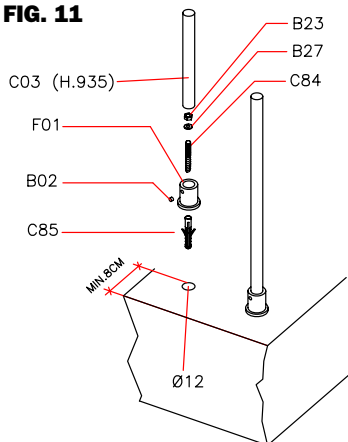
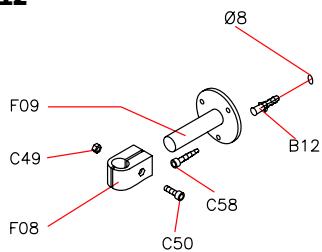
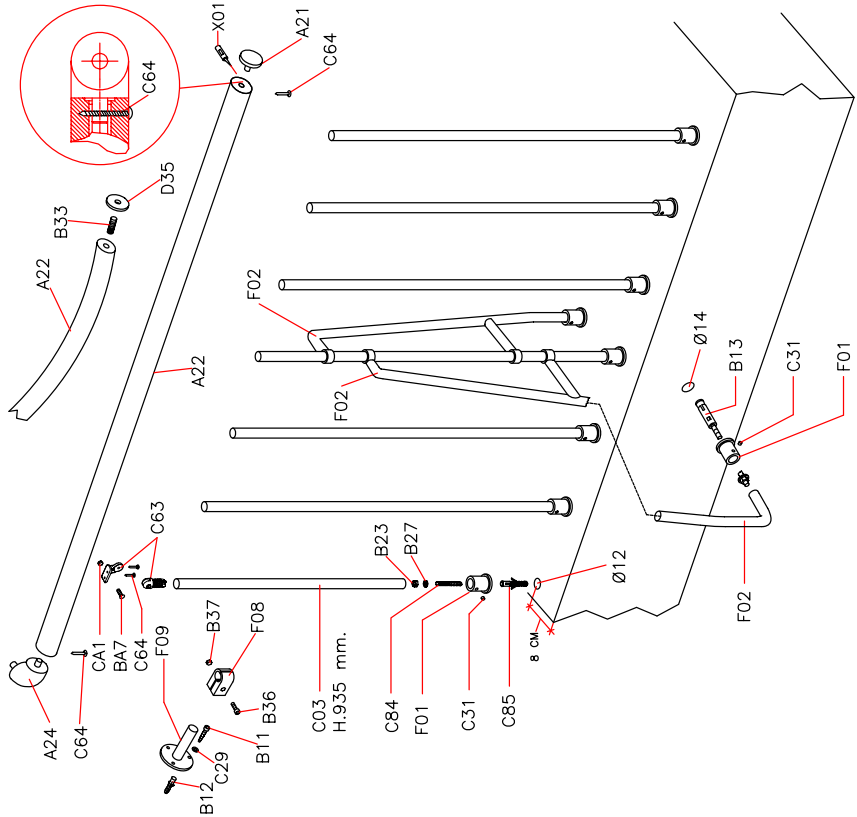
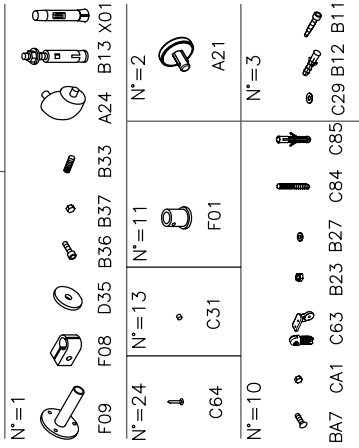
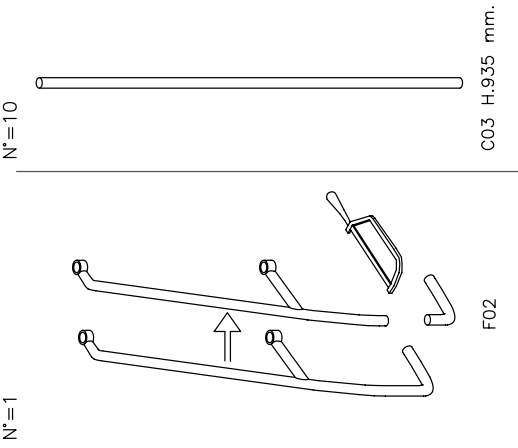
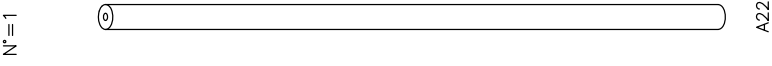


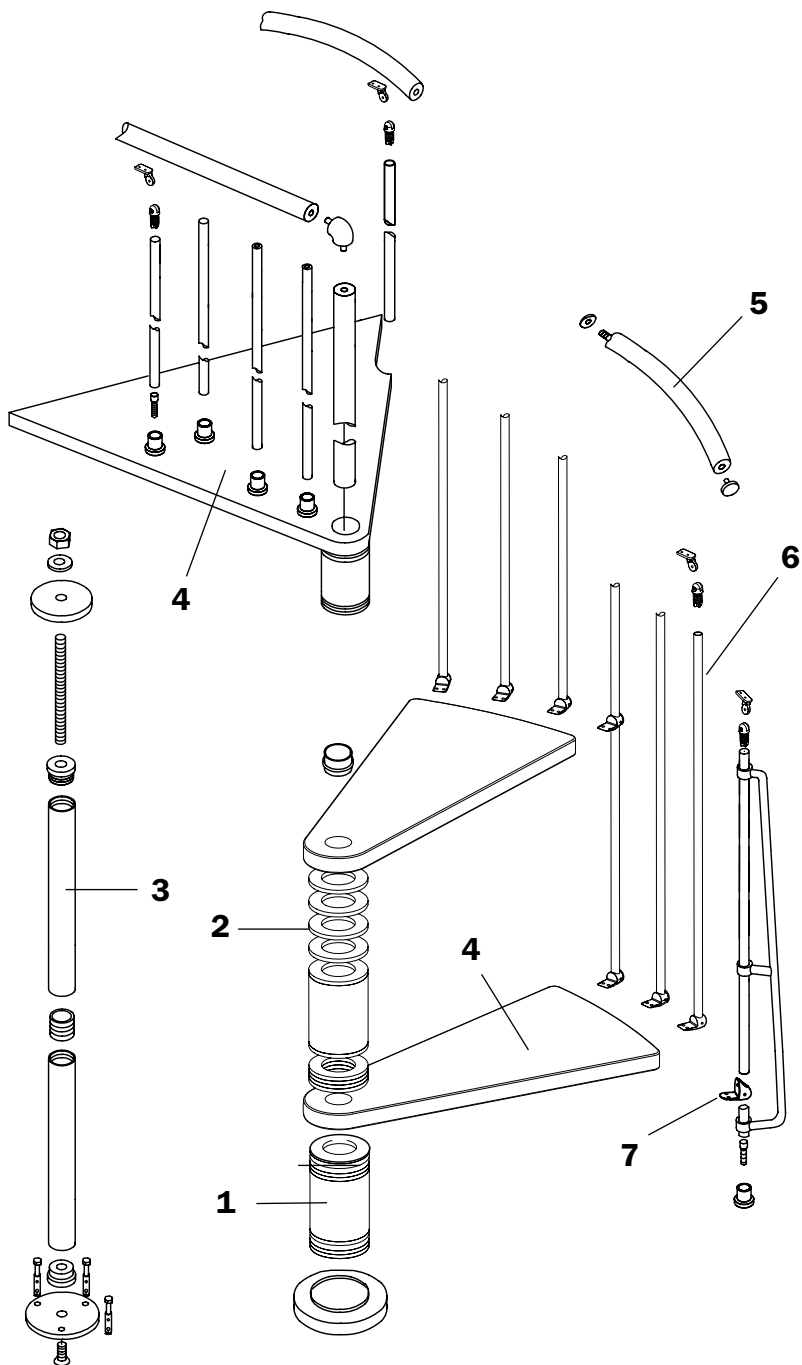
FIG. 12







PRODUCT DETAILS



product details

trade name: **MAGIA 70**

type: spiral round staircase

used materials

STRUCTURE

description

composed by metal spacers **(1)** and plastic spacers **(2)** stacked and packed on the central modular pole **(3)**

materials

spacers: Fe 370

plastic spacers: nylon

pole: Fe 370, galvanized

finishing

spacers: oven varnishing with epoxy powders

TREADS

description

wooden circular treads **(4)** stacked on the central pole **(3)**

materials

birch plywood

finishing

colour: water-base

undercoat: polyurethane

finishing: polyurethane

RAILING

description

composed by metal vertical balusters **(6)** fixed to treads **(4)** and by a PVC handrail **(5)**

materials

balusters: Fe 370

handrail: PVC with aluminium core

finishing

balusters: oven varnishing with epoxy powders

fixings **(7)**: zamak

CLEANING

clean with a soft wet cloth, without any product containing solvents or abrasive materials.

MAINTENANCE

about 12 months after the installation date, check the tightening of bolts on the various components. all non-routine maintenance procedures must be carried out in a strictly professional manner.

USE PRECAUTION

avoid any improper use that is not in accordance with the product. possible violations or installations which don't comply with the providers instructions can invalidate the agreed product conformities.



■
Magia by Fontanot
Albini & Fontanot S.p.A.
Via P. Paolo Pasolini, 6
47853 Cerasolo Ausa
Rimini, Italy

tel. +39.0541.90.61.11
fax +39.0541.90.61.25

D.U.M. 04/2010